

# Where Should Turtle Be?



By Susan Ring  
Illustrated by  
Laurie Allen Klein



# Where Should Turtle Be?

Little turtle was lost! Free from his egg, he climbed out into a big, beautiful new world. Lost and alone, he wondered—where did he really belong? The bear told him to live in the woods; the frog said, “The swamp!” But turtle just didn’t feel at home. He needed help, but where could he turn? Author Susan Ring helps turtle in this whimsical story of self-exploration and nature, *Where Should Turtle Be?* Detailed illustrations by Laurie Allen Klein give these friendly animals personality, and in the end, an unexpected tickle and tumble help turtle find his place in his new world.

It’s so much more than a picture book . . . this book is specifically designed to be both a fun-to-read story and a launch pad for discussions and learning. Whether read at home or in a classroom, we encourage adults to do the activities with the young children in their lives. Free online resources and support at [ArbordalePublishing.com](http://ArbordalePublishing.com) include:

- For Creative Minds as seen in the book (in English & Spanish):
  - Turtle Fun Facts
  - Match the Turtle Adaptations Activity
  - Match the Turtle to its Habitat Activity
- **Teaching Activities:**
  - Reading Questions
  - Language Arts
  - Science
  - Mathematics
  - Geography
  - Coloring Pages
- **Interactive Quizzes: Reading Comprehension, For Creative Minds, and Math Word Problems**
- **English and Spanish Audiobooks**
- **Related Websites**
- **Aligned to State Standards (searchable database)**
- **Accelerated Reader and Reading Counts! Quizzes**
- **Lexile and Fountas & Pinnell Reading Levels**

**eBooks with Auto-Flip, Auto-Read, and selectable English and Spanish text and audio available for purchase online.**

Thanks to Lou Perrotti, Conservation Coordinator, and Jim Hitchiner, Lead Keeper, Tropics at Roger Williams Park Zoo (RI); and to Dr. Lundie Spence, Director, COSEE SouthEast and the South Carolina Sea Grant Consortium, for verifying the accuracy of the information in this book.

**Susan Ring** is an Emmy-award winner and prolific writer, who specializes in writing for children, and through her creative services company, Monkey-Says, she writes for all types of media. Her experience in television and video includes creating characters and writing songs. Her song “Where’s My Nose?” won third place in the 2006 International Songwriting Competition, competing against thousands of other songwriters worldwide. Although *Where Should Turtle Be?* is Susan’s first Arbordale book, she has over 135 books to her name. Susan lives in Rhode Island.

**Laurie Allen Klein** has been a freelance artist for nearly 20 years. Over the last several years, she has worked as the on-staff artist for a marine park, where she does everything from painting life-size sea animal murals, to illustrating children’s activity books. In addition to *Where Should Turtle Be?*, Laurie also illustrated *Solar Forecast*, *Meet the Planets*, the award-winning *Little Skink’s Tail* and *If a Dolphin Were a Fish* for Arbordale. Laurie lives in Florida.



Susan Ring



Laurie Allen Klein

# Where Should Turtle Be?

By Susan Ring  
Illustrated by  
Laurie Allen Klein

Publisher’s Cataloging-In-Publication Data  
Ring, Susan. *Where should turtle be?* / by Susan Ring ; illustrated by Laurie Allen Klein.  
p. : col. ill. ; cm.

Summary: Little turtle was lost. Free from his egg, he climbed out into big, new world. Lost and alone, he wondered where did he really belong? He needed help, but where could he turn? Includes “For Creative Minds” educational section.

Interest age level: 004-008.

Interest grade level: P-3.

ISBN: 978-1-934359-89-1 (hardcover)

ISBN: 978-1-934359-99-0 (pbk.)

ISBN: 978-1607180-54-8 (eBook)

ISBN: 978-1607180-44-9 (Spanish eBook)

1. Turtles--Juvenile fiction. 2. Turtles--Fiction. 3. Animals--Juvenile fiction. 4. Animals--Habits and behavior--Fiction. 5. Stories in rhyme. I. Klein, Laurie Allen. II. Title.

PZ10.3.R56 Wh 2009

[E] 2008935935

Lexile Code: AD, Lexile Level: 680

Text Copyright © 2009 by Susan Ring  
Illustration Copyright © 2009 by Laurie Allen Klein  
The “For Creative Minds” educational section may be copied by the owner for personal use or by educators using copies in classroom settings.

Arbordale Publishing  
formerly Sylvan Dell Publishing  
Mt. Pleasant, SC 29464  
[www.ArbordalePublishing.com](http://www.ArbordalePublishing.com)

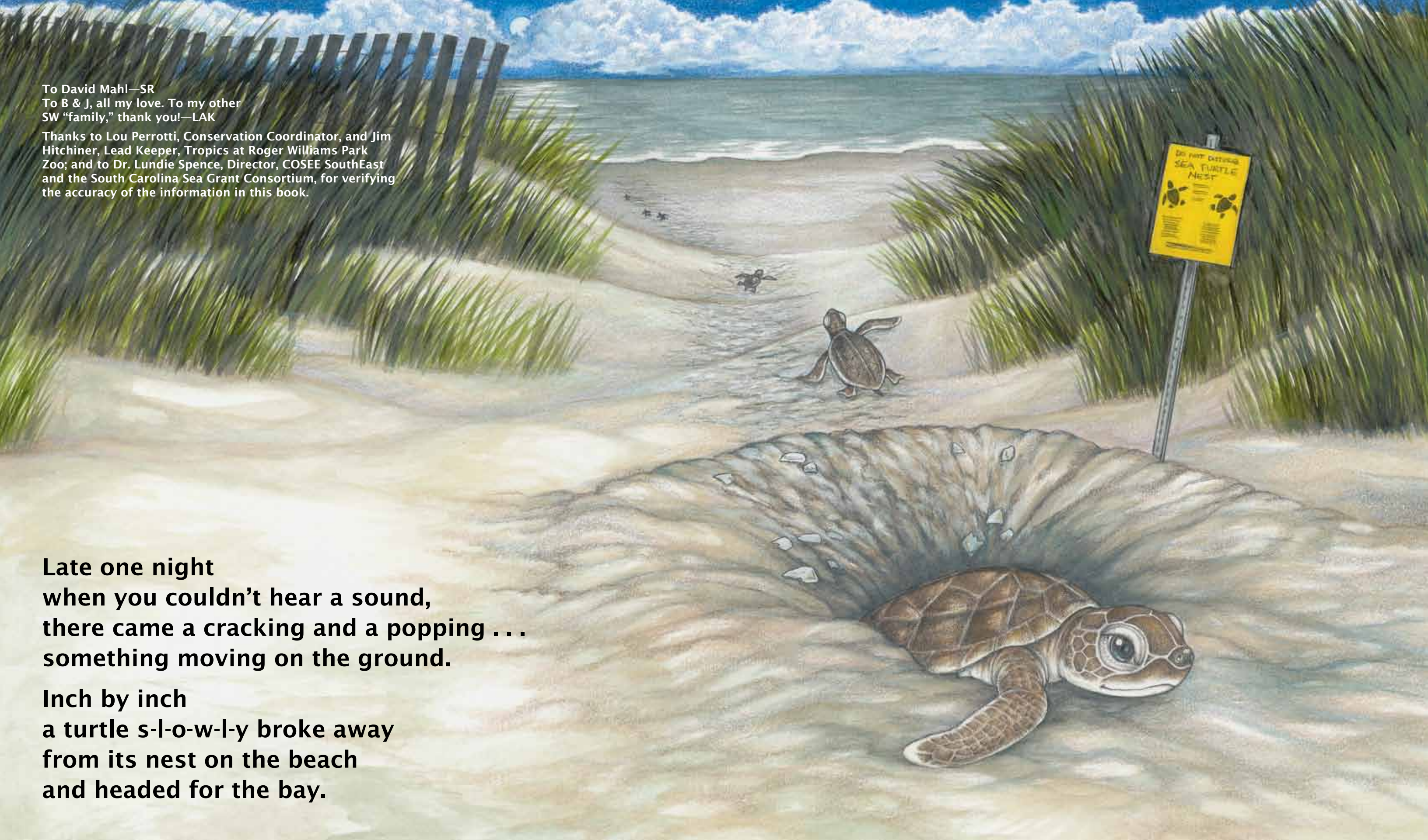


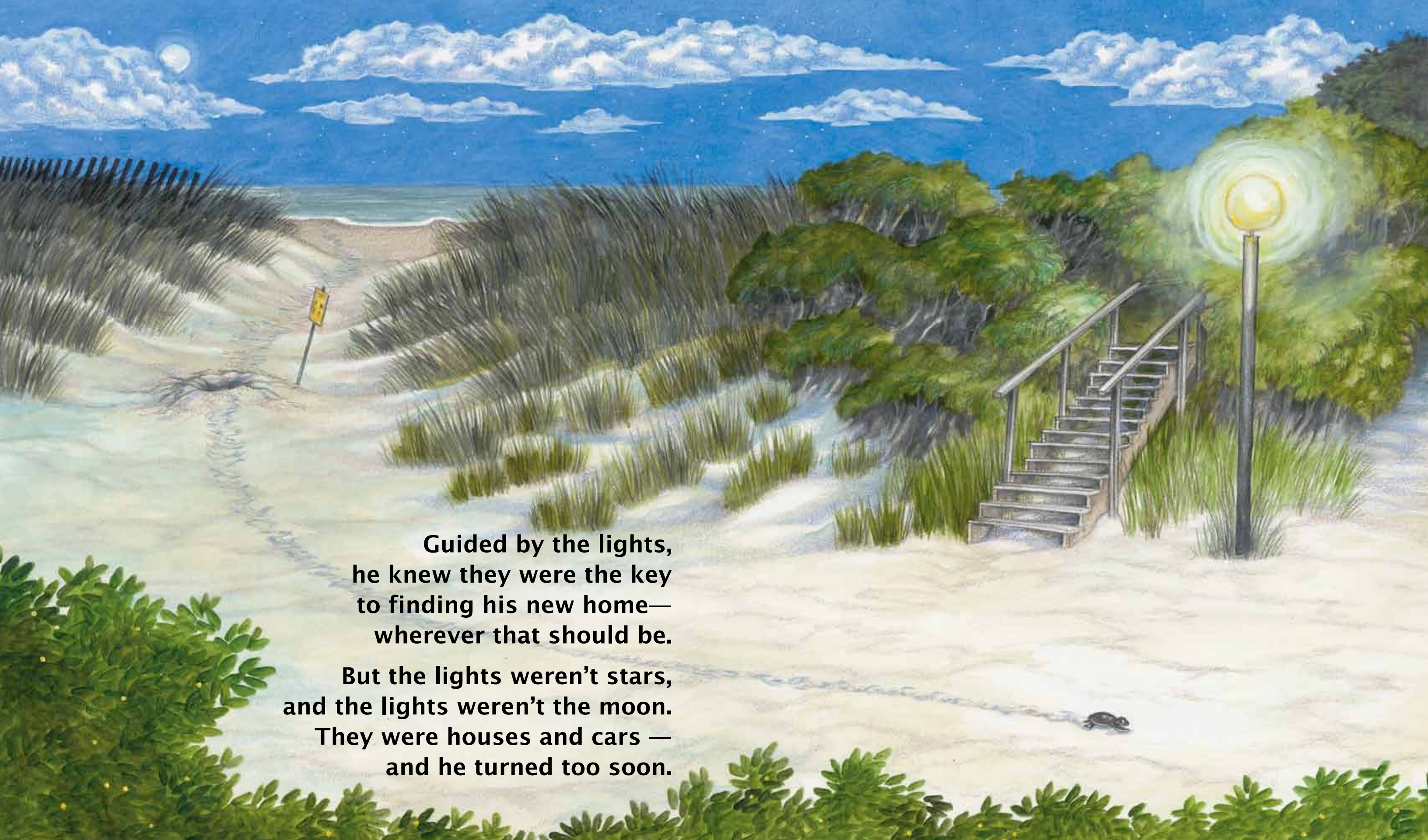
To David Mahl—SR  
To B & J, all my love. To my other  
SW “family,” thank you!—LAK

Thanks to Lou Perrotti, Conservation Coordinator, and Jim Hitchiner, Lead Keeper, Tropics at Roger Williams Park Zoo; and to Dr. Lundie Spence, Director, COSEE SouthEast and the South Carolina Sea Grant Consortium, for verifying the accuracy of the information in this book.

**Late one night  
when you couldn't hear a sound,  
there came a cracking and a popping . . .  
something moving on the ground.**

**Inch by inch  
a turtle s-l-o-w-l-y broke away  
from its nest on the beach  
and headed for the bay.**



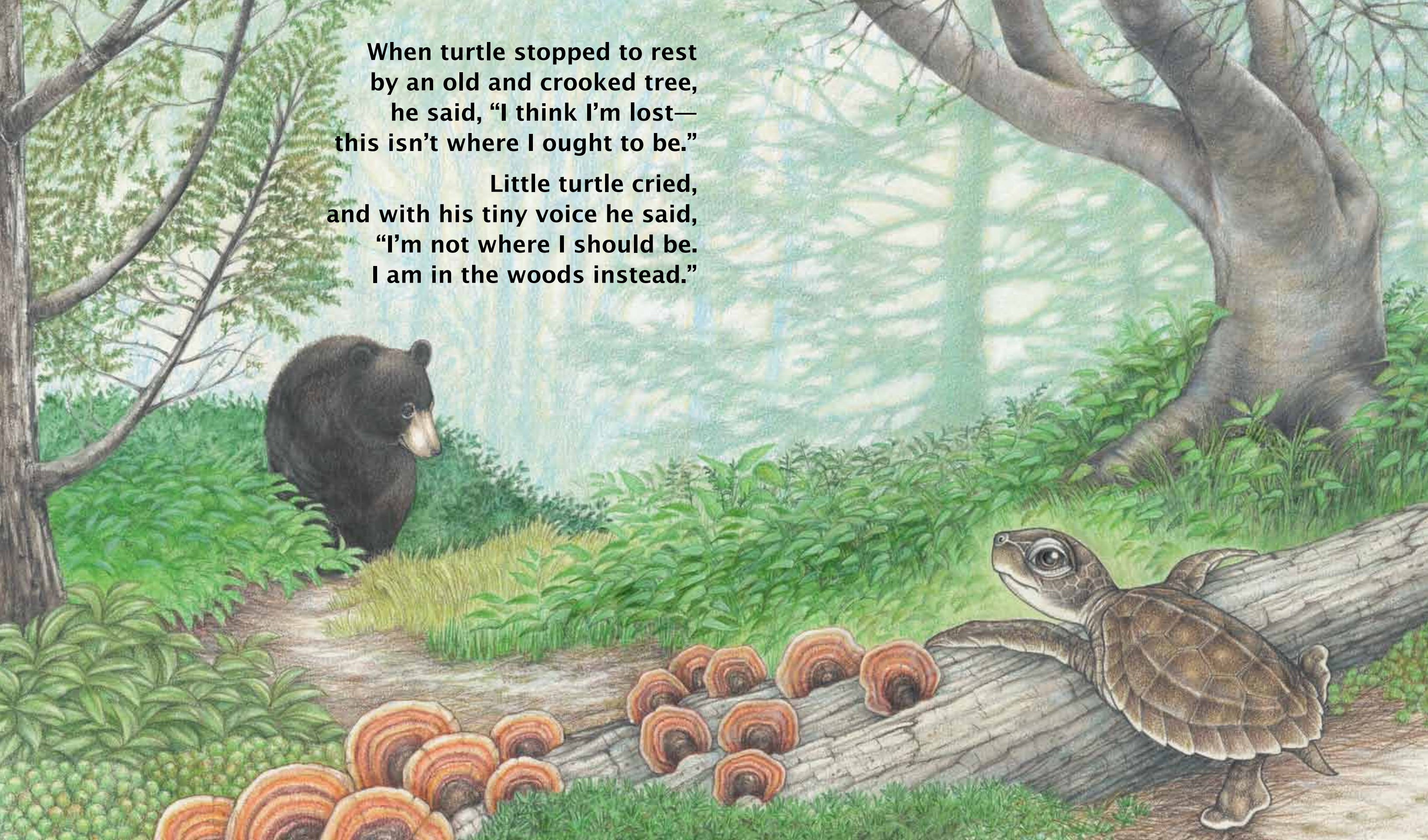


**Guided by the lights,  
he knew they were the key  
to finding his new home—  
wherever that should be.**

**But the lights weren't stars,  
and the lights weren't the moon.  
They were houses and cars —  
and he turned too soon.**

**When turtle stopped to rest  
by an old and crooked tree,  
he said, “I think I’m lost—  
this isn’t where I ought to be.”**

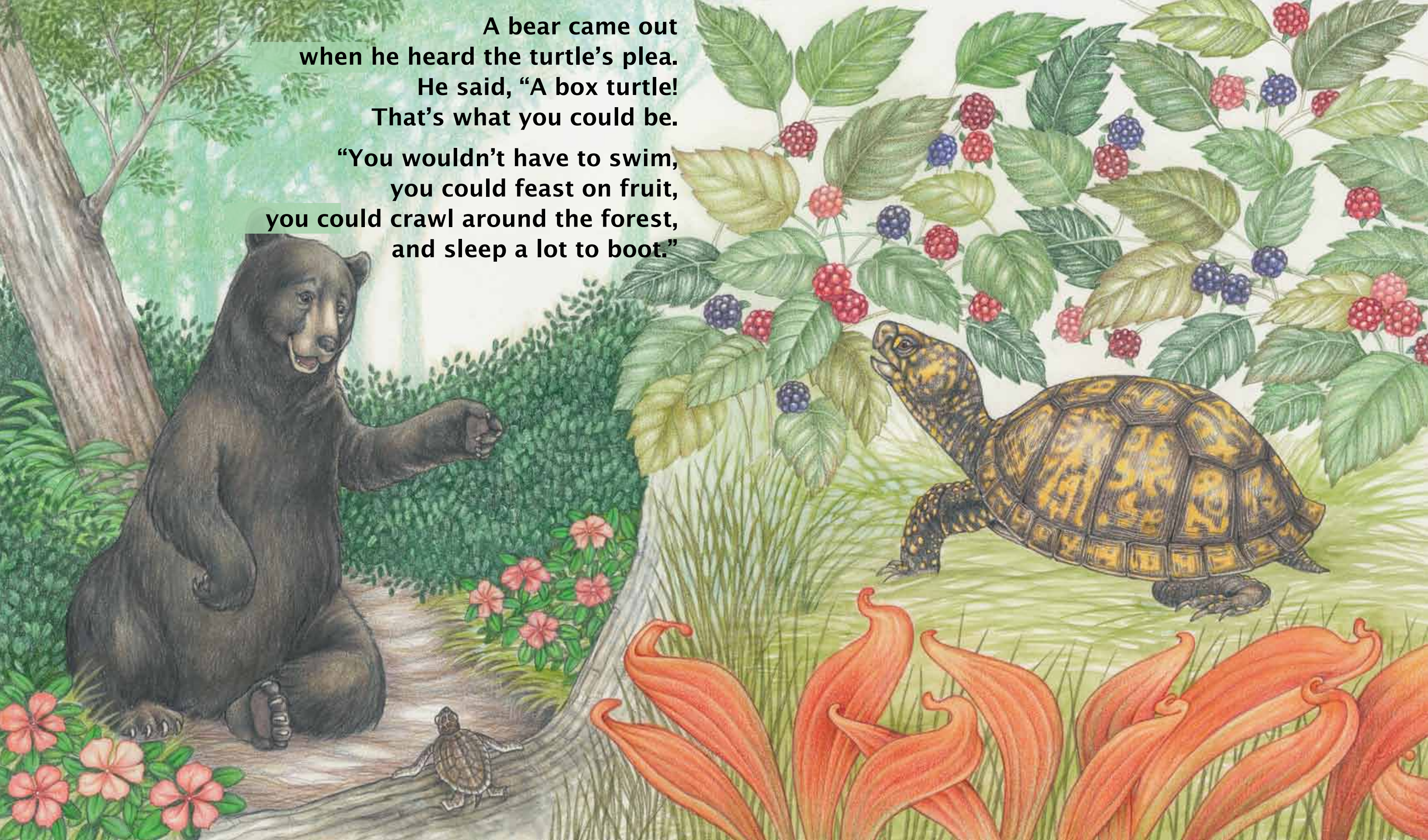
**Little turtle cried,  
and with his tiny voice he said,  
“I’m not where I should be.  
I am in the woods instead.”**

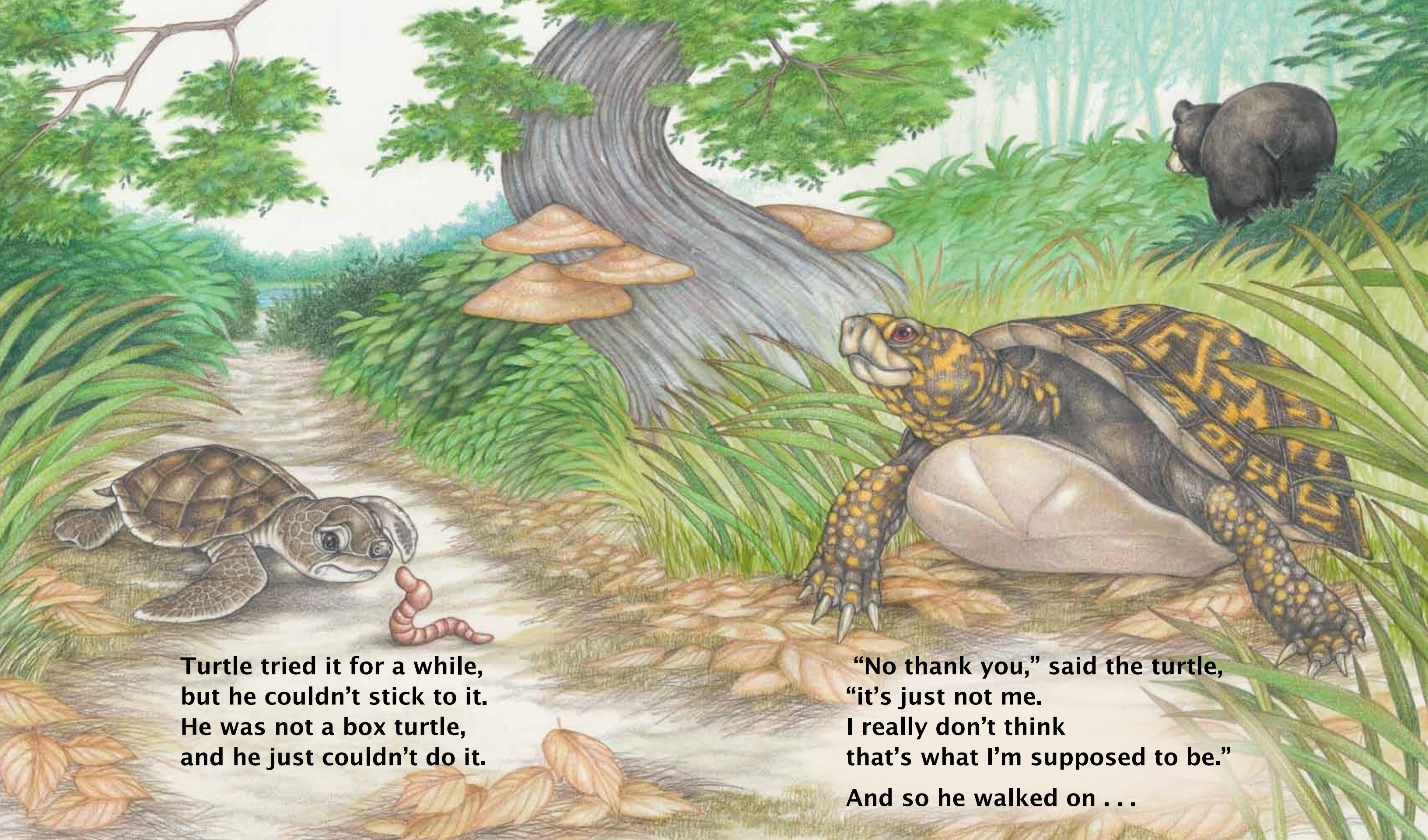


A bear came out  
when he heard the turtle's plea.

He said, "A box turtle!  
That's what you could be.

"You wouldn't have to swim,  
you could feast on fruit,  
you could crawl around the forest,  
and sleep a lot to boot."





**Turtle tried it for a while,  
but he couldn't stick to it.  
He was not a box turtle,  
and he just couldn't do it.**

**"No thank you," said the turtle,  
"it's just not me.  
I really don't think  
that's what I'm supposed to be."  
And so he walked on . . .**

# For Creative Minds

The For Creative Minds educational section may be photocopied or printed from our website by the owner of this book for educational, non-commercial uses. Cross-curricular teaching activities, interactive quizzes, and more are available online. Go to [www.ArbordalePublishing.com](http://www.ArbordalePublishing.com) and click on the book's cover to explore all the links.

## Turtle Fun Facts

Turtles have existed for a long time. They were on the earth with the dinosaurs!

There are over 300 different types of turtles that live in habitats all over the world; including the ocean, salt marshes, wetlands, woods, grasslands, and deserts.

All turtle species lay eggs. The female turtles use their hind feet to dig a nest into which they lay their eggs. Turtles that live in water must crawl onto land to dig their nests. Sea turtles lay their nests on sandy beaches, returning to the general area where they hatched 30 to 35 years before. In the United States, these beaches are found on barrier islands in the Southeast and along the Gulf of Mexico.

The hatchlings swim directly into the ocean.

Turtles don't change shells as they grow—the shell grows with them, just like our bones grow as we grow.

All turtles are reptiles that breathe air — even turtles that live in or around the water. Sea turtles must rise to the surface of the water to breathe.

Turtles are cold-blooded, which means they absorb heat from their surroundings. Many turtles may be seen basking in the sun, warming themselves. Some turtles hibernate in the winter, and sea turtles migrate to warmer waters.

Sea turtles find their way to the ocean by moving toward the brightest, most open horizon, which under natural conditions is towards the ocean. Bright lights from houses may cause the turtles to crawl the wrong way, just like the turtle in this story. Most turtles that go the wrong way are not lucky enough to survive. Some get stuck in ditches or tracks or get run over by cars.

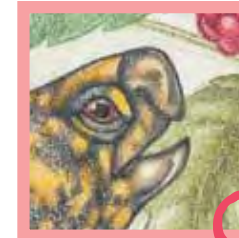


## Match the turtle adaptations

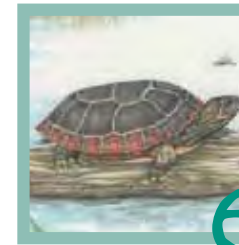
Turtle bodies are adapted to their environment. Match the description to the corresponding image. Answers are upside down on the bottom of the page.



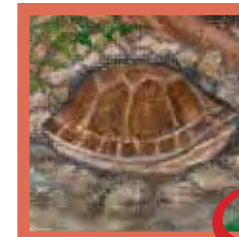
a.



c.



e.



g.

1. Turtles that live in water and on land often have **webbed feet** for the water and claws to help them crawl on the land.

2. Sea turtles have **flippers** to help them swim in the ocean.

3. Painted turtles **bask** in the sun to get warm. You may see them on rocks or logs.

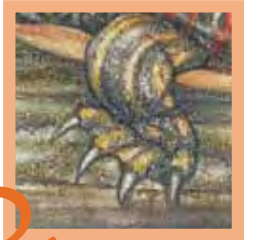
4. Box turtles have a hinge so they can **completely close** their shells for protection!

5. **Sea turtles** cannot pull their head or flippers in at all.

6. Turtles don't have teeth like we do, but they have strong **beaks** that they use to crush food.

7. A turtle's shell is actually part of its skeleton. The top part, called a **carapace**, is really its backbone and ribs. The shape and color of the carapace is different for different types of turtles. For example, a box turtle has a high, rounded carapace—almost like a helmet, so that it can pull its head and limbs tightly inside.

8. The bottom part of the shell is called a **plastron**. Some, but not all, turtles' plastrons cover their entire body.



b.



d.



f.



h.

Answers: 1. b, 2. h, 3. e, 4. g, 5. a, 6. c, 7. d, 8. f



Match the turtle to its habitat

1.



ocean

A.



box turtle

2.



woods

B.



painted turtle

3.



ponds, wetlands, and slow-moving rivers

C.



terrapin

4.



salt marsh

D.



sea turtle

answers: 1. D, 2. A, 3. B, 4. C

If you enjoy this book, look for other Arbordale books that may also be of interest:



Includes 3 pages of learning activities.  
Look for more free activities online at

[ArbordalePublishing.com](http://ArbordalePublishing.com)